

KAI O S E I

IKI ISLAND

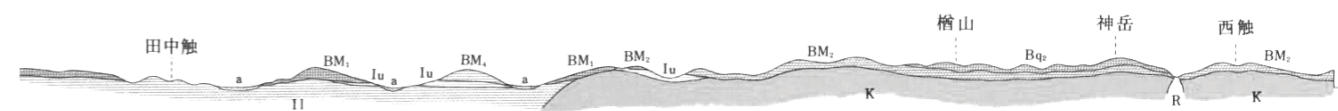


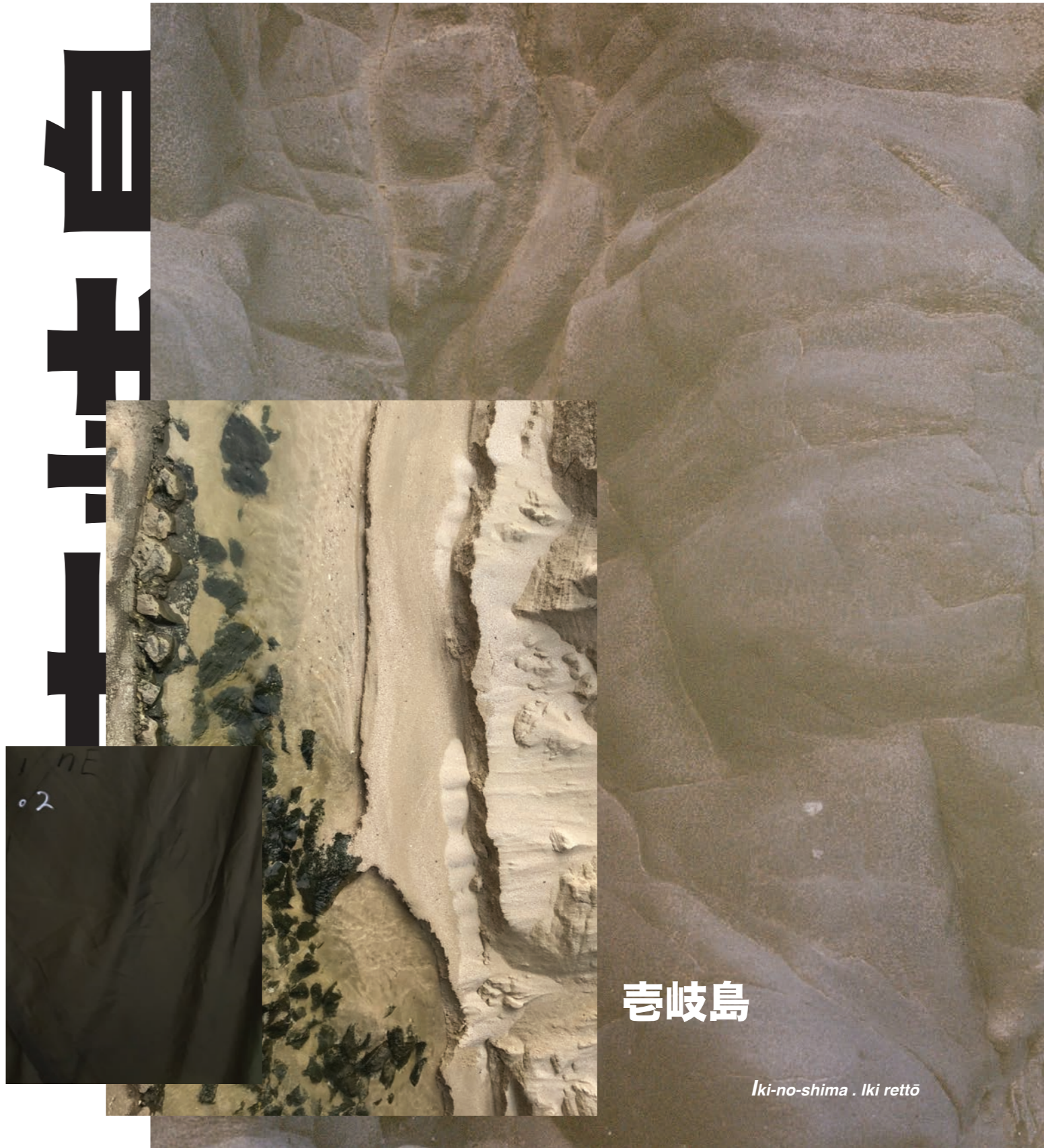
1958 GEOLOGICAL SURVEY OF JAPAN

1:50,000



高距離海面毎20米

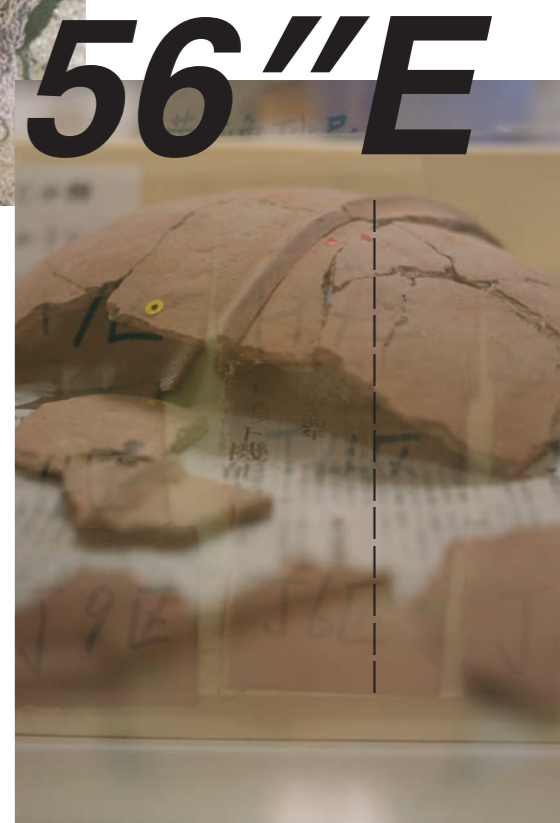
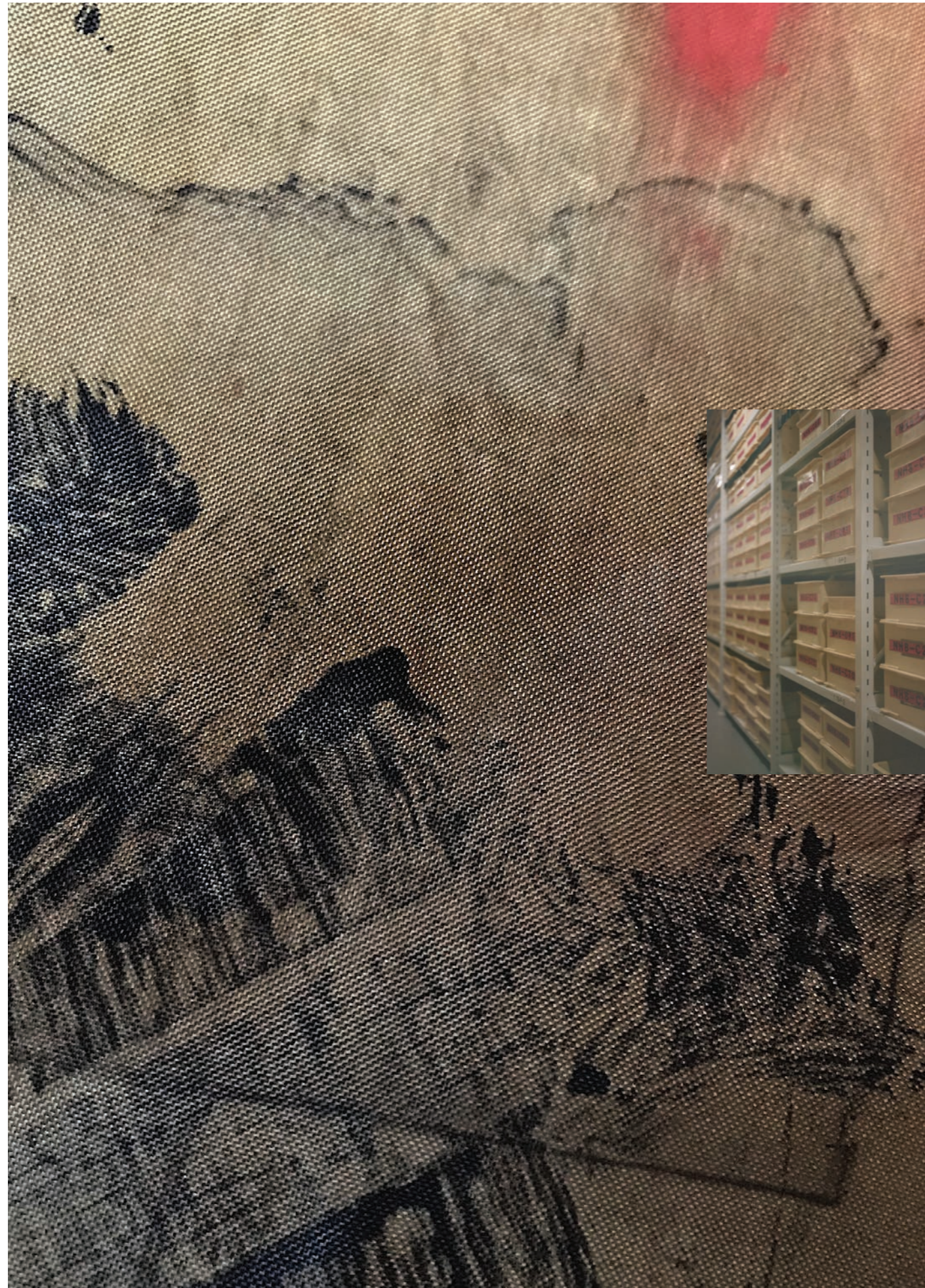






一支国



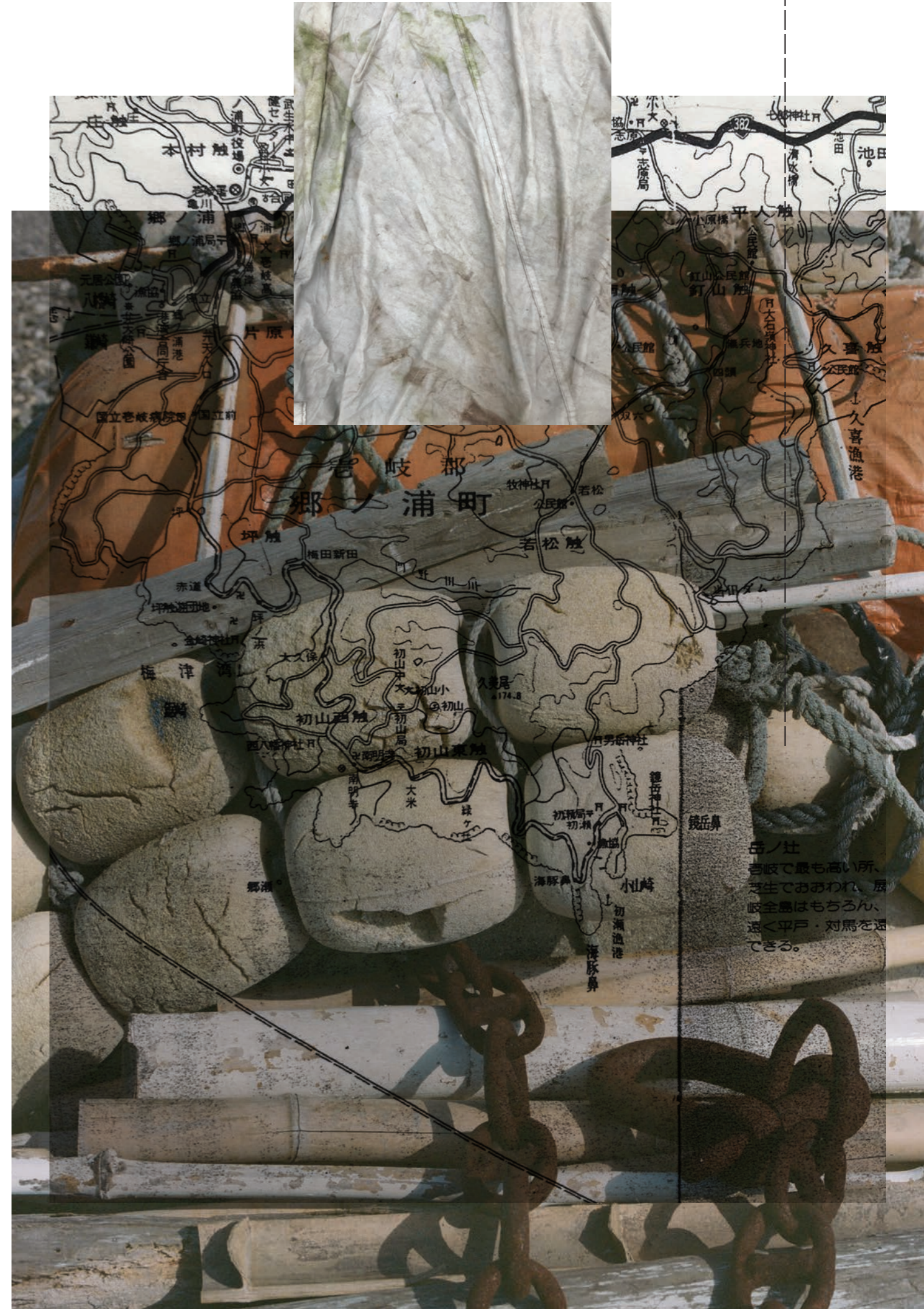


56"E

//
//
//
//
//
//
//
//
//
//
//
//
//
//
//
//
//
//
//
//

/ 33°43'23"N 129°38'56"E

Detail from "Reef"





Detail from work in progress



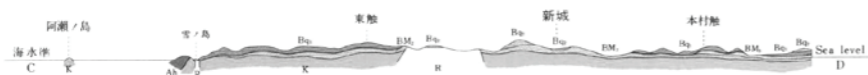
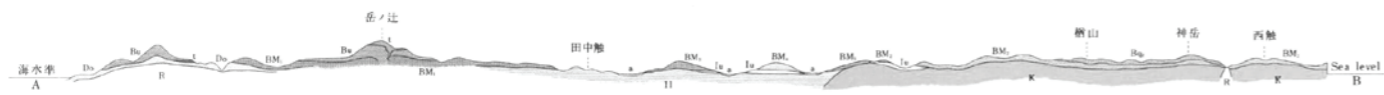
Izanagi | 2018 | mixed media on nylon | 166 x 135 cm



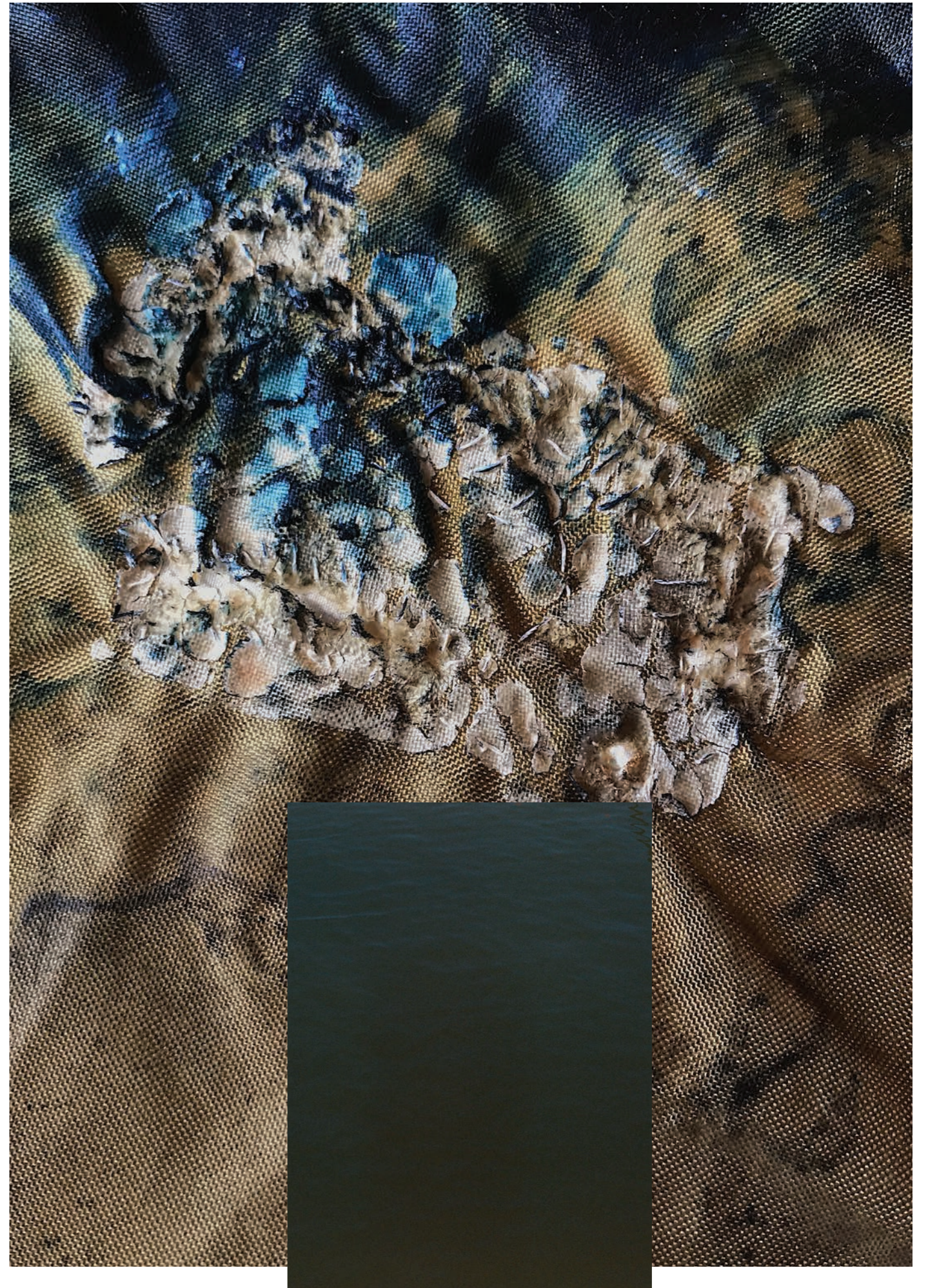
Detail from "Gale"



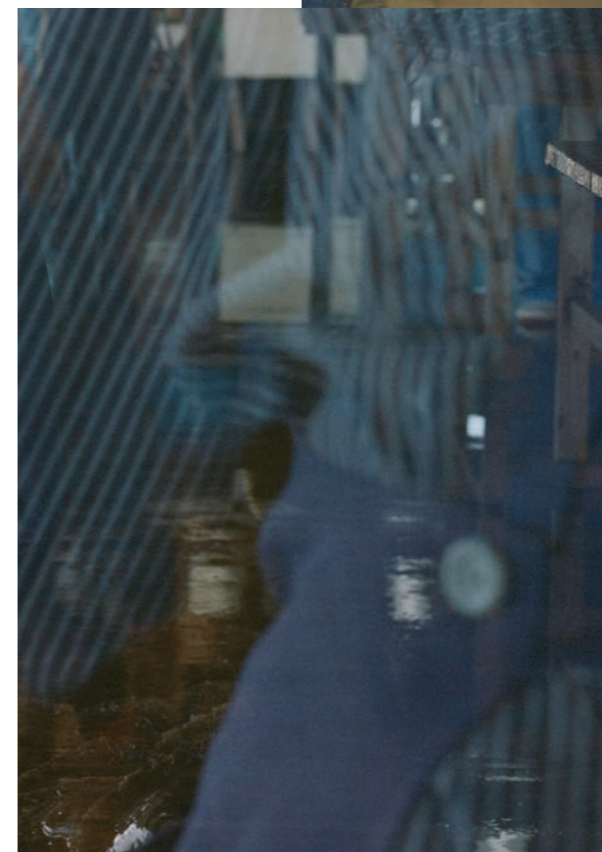
Gale | 2018 | mixed media on nylon | 117 x 64 cm



水平 1:150,000
断面 1:25,000



Detail from "Kaiosei"

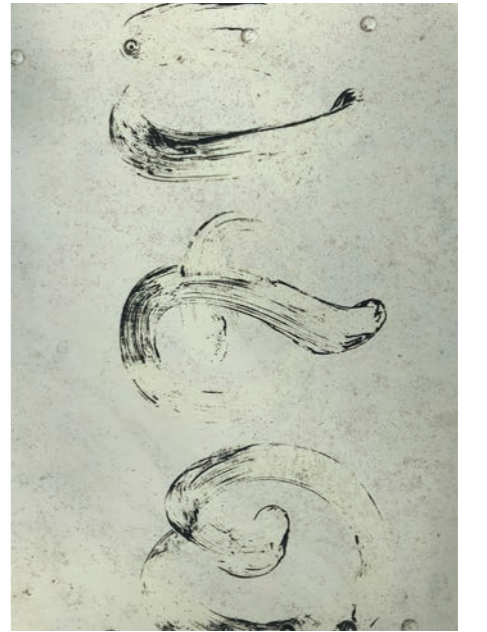


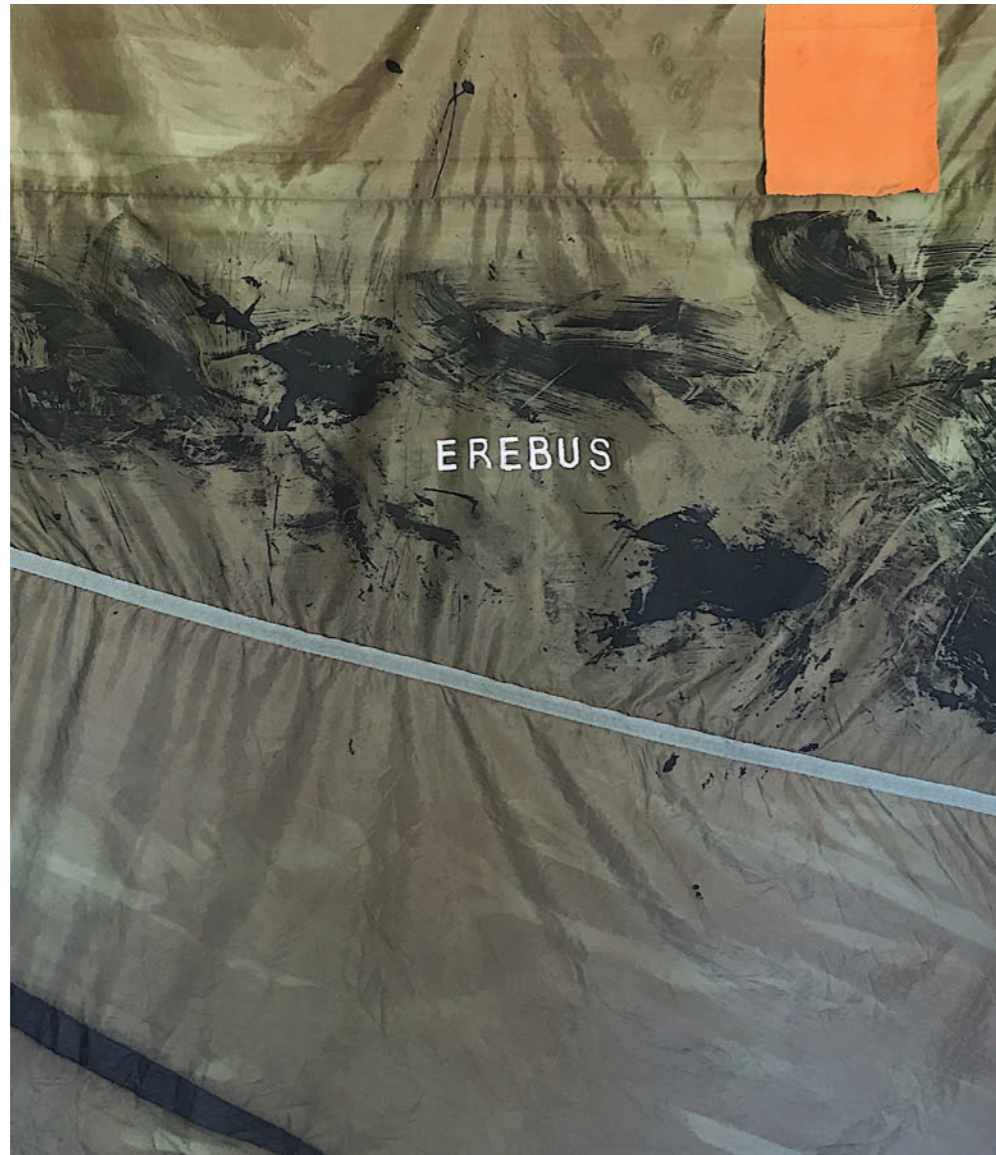


Detail from work in progress



Creus | 2018 | mixed media on nylon | 166 x 135 cm

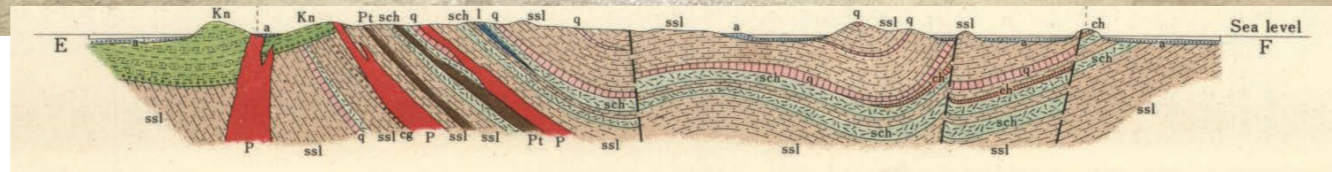
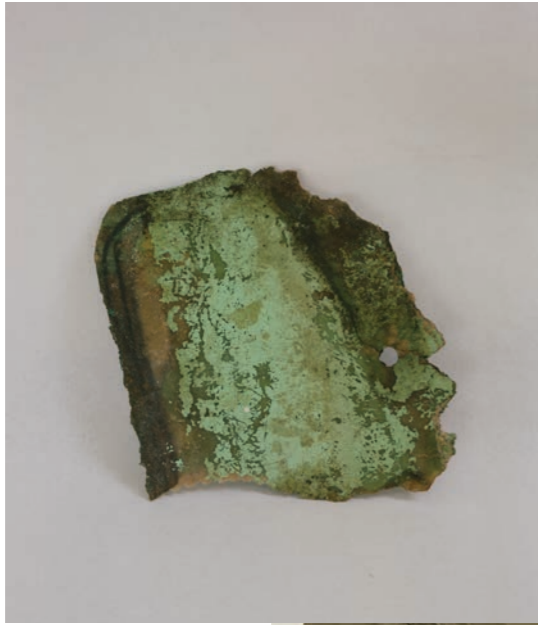




Erebus | 2018 | mixed media on nylon | 166 x 135 cm

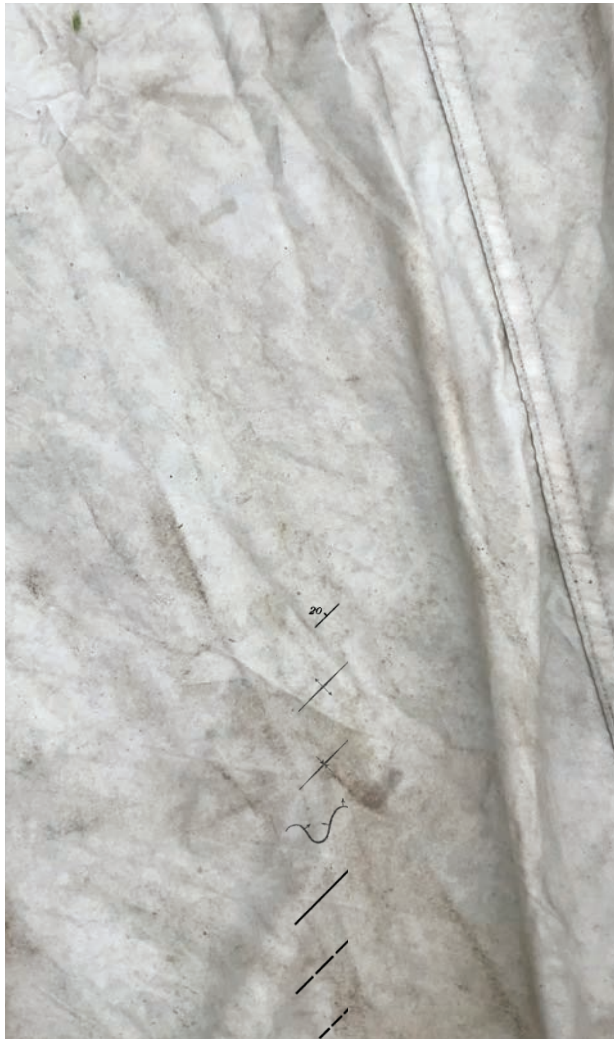


Detail from "Erebus"





F A T H O M L I N E S



20



X

X



Γ

c

ci